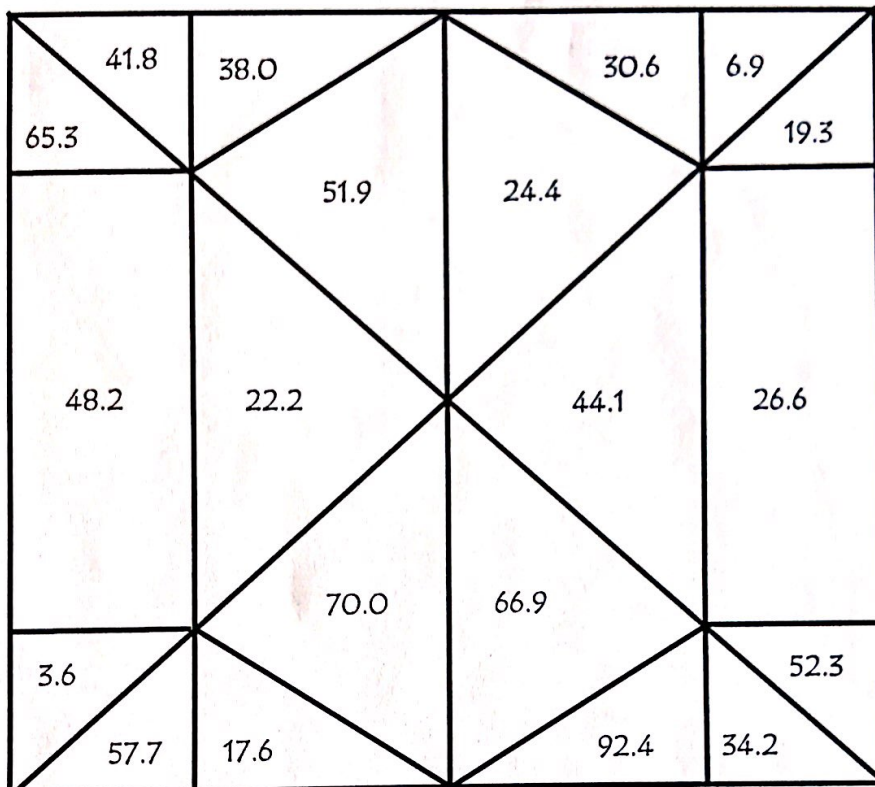


Trig Ratio Scavenger Hunt

Name _____

Date _____ Class _____

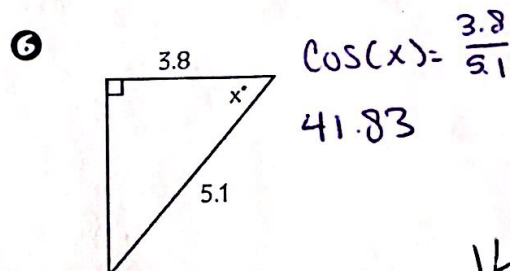
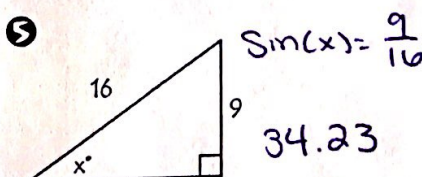
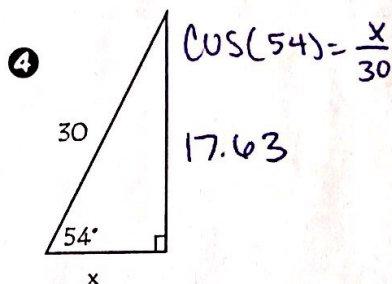
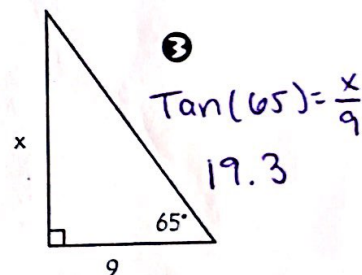
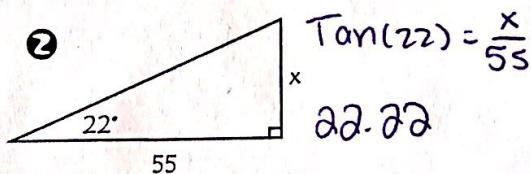
Directions: Find the value of x in the following problems. Then, find the answer in the puzzle above and color that piece according to your color chart. The answers will only be used once and not all answers will be used.



Color 1

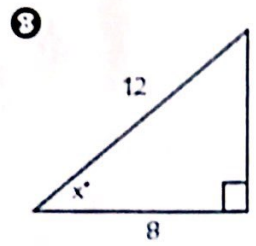
1 $\sin 27^\circ = \frac{x}{8}$

3.63



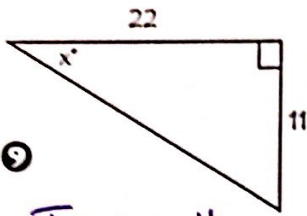
Color 2

7 $\tan 18^\circ = \frac{x}{75}$ 24.37



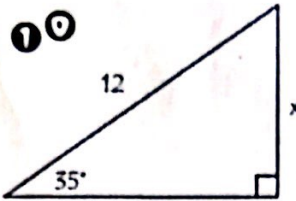
$\cos(x) = \frac{8}{12}$

48.19



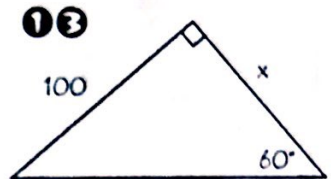
$\tan(x) = \frac{11}{22}$

$x = 26.57$



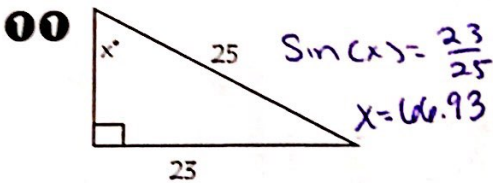
$\sin(35) = \frac{x}{12}$

6.88

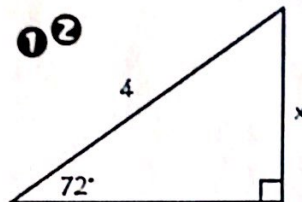


$\sin(60) = \frac{100}{x}$

$x = 115.47$



$\sin(x) = \frac{23}{25}$
 $x = 66.93$

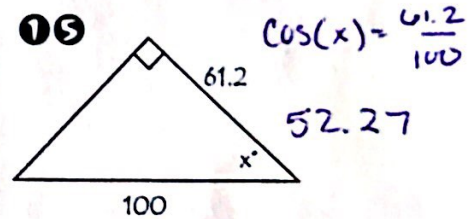


$\sin(72) = \frac{x}{4}$

$x = 3.8$

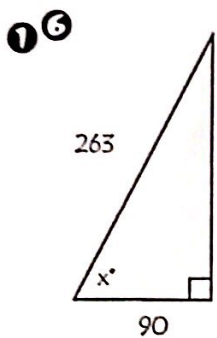
Color 3

14 $\cos 5^\circ = \frac{92}{y}$
 $y = 92.35$



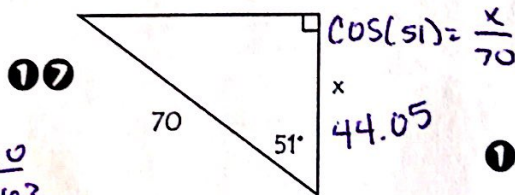
$\cos(x) = \frac{61.2}{100}$

52.27



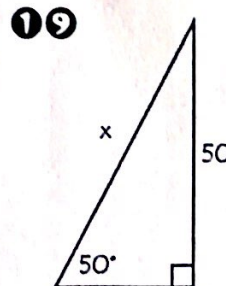
$\cos(x) = \frac{90}{265}$

69.99



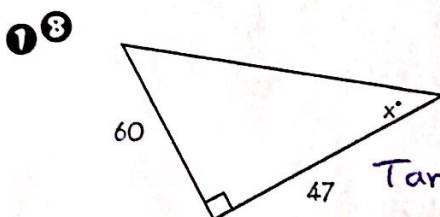
$\cos(51) = \frac{x}{70}$

44.05



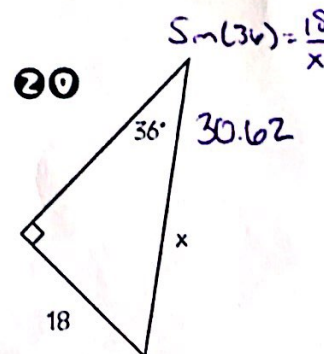
$\sin(50) = \frac{50}{x}$

65.27



$\tan(x) = \frac{60}{47}$

51.93



$\sin(36) = \frac{18}{x}$

30.62