

Unit 1 Day 4 Notes

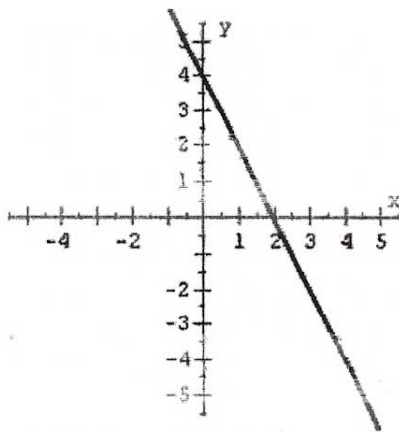
The **Domain** is the set of all first elements of ordered pairs (x coordinates).

The **Range** is the set of all second elements of ordered pairs (y coordinates).

When determining the **Domain** of a graph we observe from left to right. For the

**Range** we observe from lowest point to highest point.

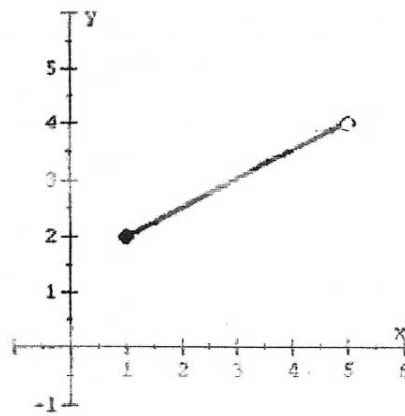
Determine the **Domain** and **Range** using interval notation.



$$y = -2x + 4$$

Domain:

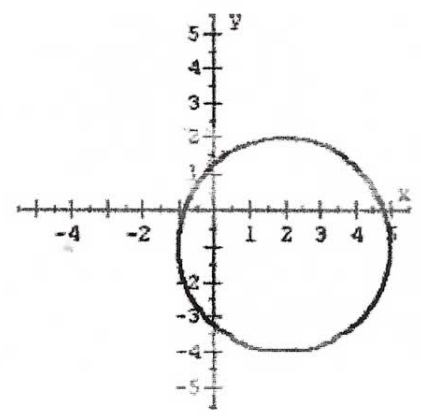
Range:



Segment

Domain:

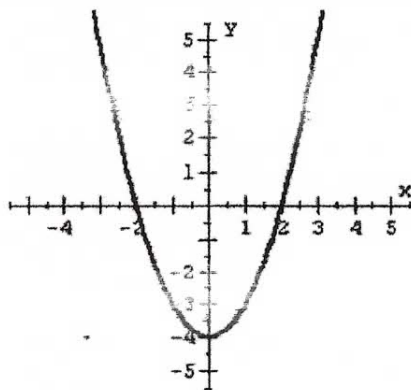
Range:



$$(x - 2)^2 + (y + 1)^2 = 9$$

Domain:

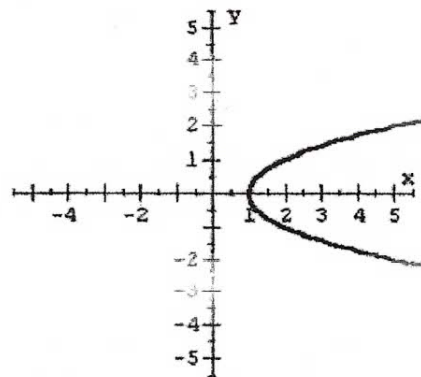
Range:



$$y = x^2 - 4$$

Domain:

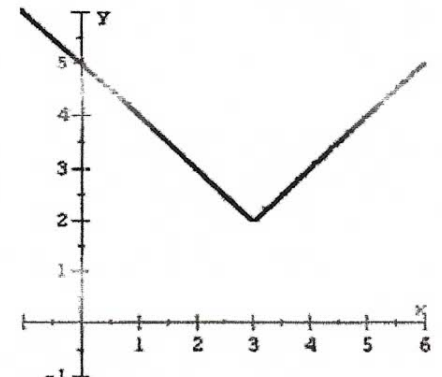
Range:



$$x = y^2 + 1$$

Domain:

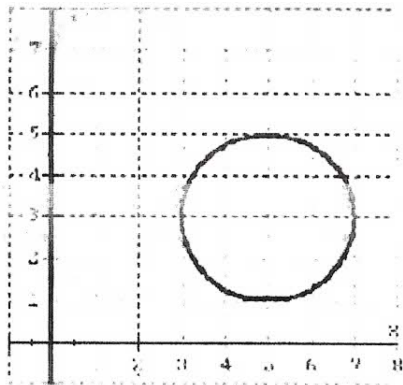
Range:



$$y = |x - 3| + 2$$

Domain:

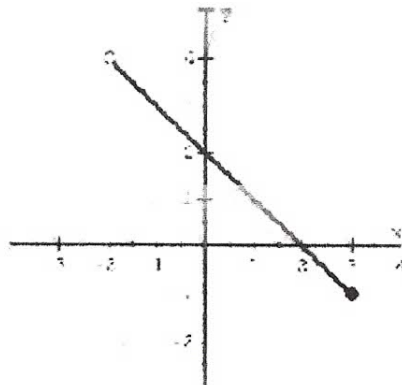
Range:



$$(x - 5)^2 + (y - 3)^2 = 4$$

Domain:

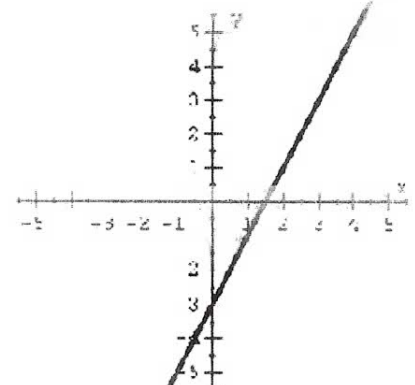
Range:



Line Segment

Domain:

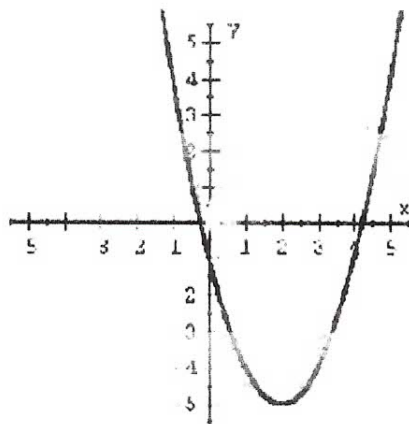
Range:



$$y = 2x - 3$$

Domain:

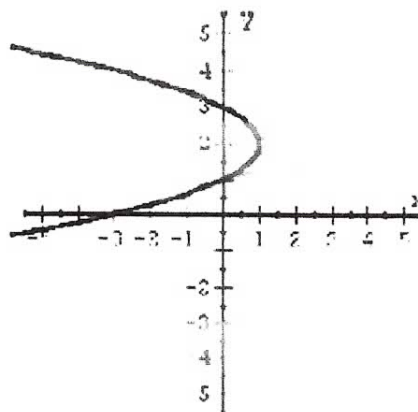
Range:



$$y = (x - 2)^2 - 5$$

Domain:

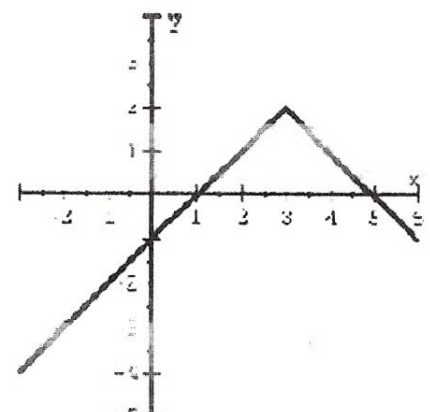
Range:



$$x = -(y - 2)^2 + 1$$

Domain:

Range:



$$y = -|x - 3| + 2$$

Domain:

Range: